



angus Raff angus



August 2020

NEWSLETTER



RAFF ANGUS BULL SALE MONDAY SEPTEMBER 21ST

After a five-year absence from an auction sale we return this September with 45 rising two-year-old bulls.

Since our re-location south we have continued with bull sales by selling privately in the paddock. Both new and loyal clients have supported us over these past years however we were aware that some would find it simply too difficult purchasing off King Island. In making this decision we were mindful of the current global difficulties and travel restrictions – current and potential. This sale will be held on an online platform only with no traditional physical attendance auction sale day. All bulls will be sold through the Elite Livestock Live In-room Online Auction. We are well aware that actual inspection of bulls is essential for most. Because of this and our preference to have bulls safely on mainland and settled prior to selling, these bulls were sent across to mainland early July and are now located at COROWA, NSW. We promote this sale as Pedigrees with a difference... We like looking at our cattle. We obviously want our cows to maintain all fertility and maternal qualities of both past and modern

times but we still want them to have the capacity and rib with that hip and pin width and depth of body shape of the past. We want our bulls to have presence with strong heads and length of neck. We want them to have width of top line, depth of hindquarter with actual muscle expression. Weight still drives profitability – they must weigh heavy with high yields and extra carcass weight. We find that the modern Angus genetics are too small for our program and generally they lack the capacity, bone and muscle that we are looking for. Most have a side profile but from behind have limited natural thickness with narrow hips and pin-set with a protruding tail set - we don't like poppy eyes and piggy ears with narrow muzzles. Because of this change in phenotype within the modern Angus and our refusal to use these genetics, our pedigrees are different. In fact, if you were to look at the most widely used high \$Index sires over the past decade Raff Angus would not contain any of them.

Marketing of this year's sale bulls... we don't boast sale comments such as 'this lot ranks in the top 10% for all Indexes...' This is our choice – it's not because we can't but because we choose not to. They're easy to create. Instead we have stuck to our beliefs, our client's successes and our own within herd carcass feedback data and actual paddock performance. If you are a modern cattleman that likes graphs and put more emphasis on the piece of paper than the integrity of the producer and its program then you won't like our cattle. If you like the actual carcass data on full brothers to these sale bulls and trust that over the past 55 years we have been focused on producing Angus seedstock genetics that are profitable for all sectors of the Australian Beef Industry - then these bulls should well suit your program.

“
Pedigrees with a Difference with Performance on the Hook
”

Bulls located at Corowa NSW.

Inspection Day Friday 11th September

SALE DAY MONDAY 21ST SEPTEMBER @ 1pm.

Please go to our website for updated sale information www.raffangus.com.au

Andrew Raff – 0429 691 975



Sales manager – Michael Glasser
GTSM 0403 526 702



Sale will be held as a live in-room online auction through Elite Livestock Auctions and auctioneered by Michael Glasser from GTSM Livestock.

Sire verified. Genomic tested. Breeding Soundness Evaluated. Individually videoed with photo. Scanned for IMF%, EMA & Fat with actual carcass data on same group steer brothers available. Ear notch tested free of Pesti-virus. Vaccinated for Tick Fever, Vibrio, Pestiguard & 7in1. 100% pasture raised – no grain, supplement or loose lick.

DO EBV'S ACCURATELY DESCRIBE OUR CATTLE...

It is well documented that for decades we have struggled with the way Breedplan has reported our herd. We acknowledge that for some herds it may well report theirs accurately, however for us, particularly for calving and carcass, we believe it does not.

Calving... Most of this year's sale bulls are reported on paper as hard calving. However not one of these bulls were assisted at birth. In fact, of the 434 'P' calves born in 2018 just 1.15% were assisted – this includes 1st calvers.

Carcass... Our herd is reported as very lean with limited marbling. Fat... not once have we had clients say that the progeny from our bulls were too lean and could not finish. There is industry confusion between fat and easy doing ability.

We believe that with the selection of high fat EBV cattle you have a tendency to get fat (lumpy deposits) within the brisket and over the pins and often does not associate with an animal that is better equipped to handle harsh environments. Whereas easy doing better describes constitution. Animals of easy doing nature tend to have more girth and natural fleshing ability. Further, in our opinion and from our observation, these animals are better equipped to handle tougher times. Marbling... we are reported as having very little or no marbling in our herd. With near 500 Raff Angus carcasses processed within the past 2 ½ years we at last have the facts to support our belief. Raff Angus cattle do marble well above industry averages. Of interest, there has been little correlation in our herd between the animals EBV and their actual carcass informa-

tion. In fact, often the least profitable index graphed steer on paper will be the most profitable carcass hanging on the hook, the highest IMF EBV animal will be one of the poorer marble score carcasses, well negative fat EBV animals will meet well above minimum industry specifications.

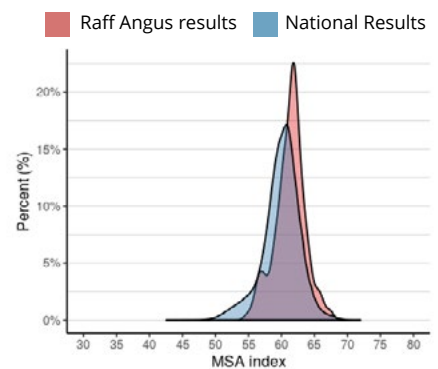
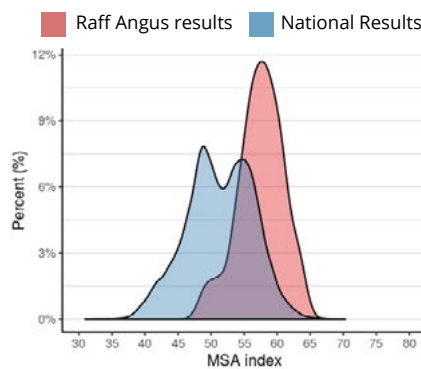
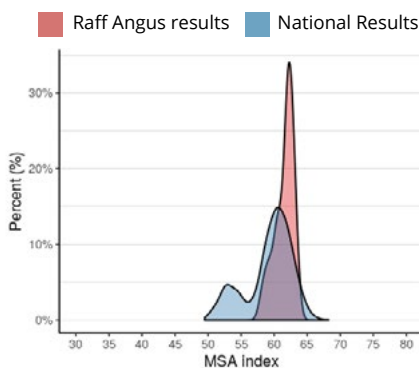
In the paddock and on the hook Raff Angus genetics calve easily and produce carcasses with enough fat coverage and marble well above industry averages. The Raff 'point of difference' is that they are genetically different, weigh heavy at a younger age and efficiently produce big carcass weights with extra yield proved by way of actual carcasses hanging on the hook - the ultimate measure of profitability.

Raff Angus actual carcass data...

Full brothers to our September 21st sale bulls were processed on 13th July – please be sure to go to our website to see the video of them. The below MSA Index graph highlights where Raff Angus sits nationally with its genetics. The graph reflects all steers processed nationwide on that day (13/07/20) and is sorted for direct comparison with an ossification score of less than 230, are grass fed only with no HGP. Comparing their carcass attributes, it further highlights that these 21-month-old Raff Angus steers had **MORE FAT, MORE MARBLING & HEAVIER CARCASS WEIGHT**. These steers were \$185 more profitable when compared to all steers processed nationally on that day.

In the past 12 months Raff Angus have processed 211 fully pedigree recorded prime yearling steers and heifers with an ossification score of less than 230. These Raff carcasses detailed below yielded a higher MSA Index, with more fat coverage and more marbling when compared nationally. Furthermore, these Raff Angus animals boasted an 84 kilogram heavier carcass. Adjusting to age similarities and at current market values of past 12 months at \$6/kg dressed weight these pure Raff Angus genetics have added \$300 per head extra profit.

In the past 12 months Raff Angus have processed 128 pedigree and performance recorded cows. The below graph highlights that Raff genetics again perform well above industry averages. Younger in age these cull cows again expressed more marbling and fat with a carcass weight advantage of 75 kilograms. Their MSA Index was substantially higher than the nation average.



“
Raff Angus - WHERE PERFORMANCE IS REAL - NOT JUST A NUMBER
 ”

Raff Angus genetics prove profitable for all sectors of the Australian Beef Industry

- GROWTH**- More money for the Breeder
- CARCASE WEIGHT**- More money for the Grower
- FEED EFFICIENCY**- More money for the Feeder
- YIELD**- More money for the Processor

“
After 55 years, if our cattle are as bad as our \$Index graphs ourselves and our many clients should be broke!
 ”

It's already been five years...

2015 marked a major restructure of Raff Angus and changes in our business model. It involved the sale of our Queensland property, the purchase of land on King Island and the massive relocation of our Angus breeding herd and family. This move marked the end of an era for us in Queensland and in some way a celebration of the beginning of our next. With this move came a restructure of the Raff Angus business model which has seen the shift from a 94% bull breeding operation to now incorporate an organic grass-fed beef production system (certified 2021) focusing on supplying the increasing lucrative market for high quality, sustainable, clean and naturally produced food.

Now Raff Angus now comprises of 1,057 hectares of pristine grazing land on King Island where we will calve down 800 registered Angus females this year. Only 25% of male calves are now kept as breeding bulls with the balance fattened on our lush green pasture. By maintaining a fully registered herd it gives us the opportunity to monitor our actual carcass feedback data giving us some powerful and meaningful genetic evaluation tools.

From Grain to Grass...

The move to King Island has allowed us to become a totally grass-fed production system for twelve months of the year without any grain supplementation. With this environmental change has come a change in our selection priorities from performance largely measured in a controlled environment to the animal's ability to perform unassisted in a natural grass-fed environment. This is unique as almost all R & D (particularly carcass evaluation) done through the benchmarking programmes and others are taken in a grain fed, feedlot situation. While our selection priorities for growth, carcass weight, feed efficiency and yield remain paramount, the significance and importance of animal health (parasite tolerance), temperament and structure has been highlighted.

RAFF GENETICS EXCEL ON GRASS, IN THE FEEDLOT, ON THE HOOK AND ON THE PLATE...

Raff Angus stud females produced best weight gain progeny for a pen of six grain-fed steers (370 days) at this year's RNA Paddock to Palate competition. A pen of Wagyu steers exhibited by Austpec Pastoral bred from pedigree Raff

Angus females took out first place for the Wagyu Challenge Competition class - they recorded an average daily weight gain of 1.239 kilograms. They also claimed the highest individual weight gain with an ADG of 1.39kg.

RAFF BRED STEERS TOP DALBY FEEDER AND STORE CHALLENGE SALE.

A tidy draft of eleven steers from Ben and Karen Usher made top money at the recent Dalby Feeder and Store Challenge sale in south east Queensland. After more than twelve months of severe drought, weeks on end of carting water and day after day of droving their cattle on public roads the Usher family were rewarded for the perseverance when their 447kg milk and two tooth steers sold for 452 cents/kg to return \$2,023/hd. Located near Warwick Ben has been a loyal client to the Raff program having purchased their first bull near two decades ago.



Photo above: Usher steers

“ The mature cow weight debate: Is a big tractor less efficient than a small one just because it consumes more fuel? ”

Steers by Raff bulls win Taste Test Competition and weight gain classes.

Clermont based cattle producers Eli and Michelle Vogel achieved outstanding success at the 2020 Clermont Cattleman's Challenge. This competition saw a number of entries of varying breeds and crosses compete within a paddock to plate format. Five steers sired by Raff Angus bulls were entered by the Vogel's.

These steers placed as follows...

- 1st - Highest weight gain on grass
- 3rd - Highest weight gain on grain

- 1st - Highest overall weight gain (pen of 3 steers)

- 1st - Taste Test Competition - MSA Index Results

The Vogel's have been tremendous supporters of the Raff program of recent times having purchased their first bulls at the last on-property sale in Queensland in 2015 with numerous bulls since making their journey from King Island to Clermont over the past 5 years.

RAFF STEERS GAIN 1ST PLACE IN MSA EATING QUALITY CLASS.

Three hundred kilometres inside the Queensland tick-line, loyal clients to Raff Angus genetics Tony & Mandy Goodwin and family of Top End Partnership at Blackwater in Queensland have proved that with good management practices and common-sense genetic selection Angus cattle cannot just survive but thrive in an environment traditionally suited to Bos Indicus types. Their vision and dedication to running a pure Angus herd in ticky country was vindicated at last year's RNA Paddock to Palate Competition where they were awarded 1st Place for MSA Eating Quality Index for Best Aggregate Pen of 6 Steers. Competing within the 120 day HGP Free Export Class there were 27 pens of six steers comprising a mix of both purebred and cross-bred pens with twelve different breeds represented. This winning pen of pure Raff Angus genetic steers also placed 9th for the earlier Overall Weight Gain with a final overall combined pen placing of 7th.

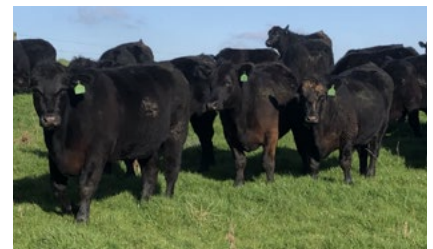


Photo above: Raff steers full brothers to sale bulls

“ No need to use Black Euros if you are losing growth and yield in your Angus - Raff Angus have comparable growth and yield to any breed or composite - with carcass quality! ”

SIRES IN USE...

With a nucleus breeding herd of 850 Angus cows and the collection of meaningful and real carcase data on near 500 of their progeny we now have the numbers to make tremendous genetic gains by using more of our home bred bulls identified as being superior in those traits important to our production system and that of our clients. We will continue to use AI and ET on a limited scale to introduce new bloodlines as we feel the need arises.

Current AI bulls we are using...



SÖNDERGARD FRED (Imp Denmark)

Fred was outright winner of a feed efficiency test against all breeds with a feed/gain ratio of 4.7:1 (cattle average is 6:1). His progeny are kind natured, long high growth cattle.



LINTON GILBERTINES POWERHOUSE T169 (Imp UK)

Powerhouse is a real performance bull backed by powerful genetics. We saw his sire when last in UK. BW - 42Kgs 400 days -812Kgs (1.925kg/day) EMA - 126sq.cm Scrotal - 39cm



RAWBURN JUMBO ERIC T627 (Imp UK)

Jumbo Eric is bred from the highest performing cow in the UK, his calves are quality plus. BW - 47Kgs 400 Days - 755Kgs (1.77kg/day) EMA - 112sq.cm Scrotal - 40cm



IDVIES ERIC S735 (Imp UK)

Eric is from a no nonsense herd in Scotland. His dam is by Rawburn Romel, a Limited Edition son we saw and rated one of the best bulls in the UK at that time. 21 months 1,100kgs



JINDRA MEGAHIT (Imp USA)

Megahit is a pure Hoff blood bull sired by Hoff Blockbuster who was strongly recommended to us by his breeder Doug Hoff. BW - 34kg WW - 370kg YW - 615kg (1.453kg/day) EMA - 99 sq.cm IMF% - 6.9

“
The Raff breeding program is to incorporate an organic grass-fed beef production system focusing on supplying the increasing lucrative market for quality clean naturally produced food.
”

Updated information on our sale bulls will be available on our website - www.raffangus.com.au



angus **Raff** angus

For any enquiries please be sure to contact us.

Andrew & Anna Raff

andrew@raffangus.com.au 0429 691 975

anna@raffangus.com.au 0427 196 064